

June 24 • August 20 • 2017

# FRANK LLOYD WRIGHT

Architecture • of the • Interior



*Frank Lloyd Wright: Architecture of the Interior* is organized by International Arts & Artists, Washington, DC, in cooperation with The Frank Lloyd Wright Foundation, Scottsdale, AZ.

INTERNATIONAL  
ARTS & ARTISTS



## Bowers Museum Presents *Frank Lloyd Wright: Architecture of the Interior*

### FOR IMMEDIATE RELEASE

#### Bowers Museum Media Contact:

Victoria Gerard  
Curator of Collections and Special Exhibitions  
(714) 567-3662  
[Vgerard@bowers.org](mailto:Vgerard@bowers.org)

#### International Arts & Artists Media Contact:

Hannah Shambroom  
Exhibition Manager  
(202) 338-0680  
[Hannahs@artsandartists.org](mailto:Hannahs@artsandartists.org)

## Frank Lloyd Wright's interior plans bring heart and hearth to Orange County's Bowers Museum

**SANTA ANA, CA (June 2017)**—The Bowers Museum in Santa Ana, California is pleased to announce *Frank Lloyd Wright: Architecture of the Interior*, a visitation of the interior home designs of Frank Lloyd Wright. Studying the obvious and subtle ways Wright created the visual character of interior space, even going so far as to meticulously design almost every object within a home, it is evident why almost 60 years after his death Wright is still known as the world's most famous architect. The exhibition's 19 reproduction drawings, 8 photographs, and 4 photographic murals of illustrate these interiors, often considered Wright's greatest architectural accomplishments. Organized by International Arts & Artists, Washington, DC, in cooperation with the Frank Lloyd Wright Foundation, Scottsdale, AZ, *Frank Lloyd Wright* is on view at the Bowers Museum from **June 24, 2017** through **August 20, 2017**.

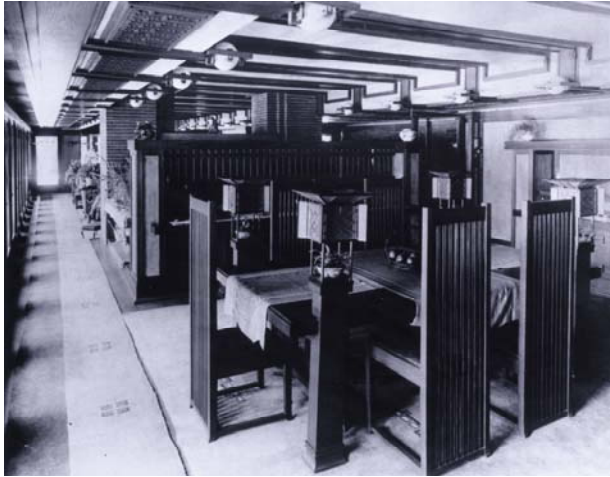
"Any building should be complete, including all within itself. Instead of many things one thing... It is the first principle of any growth that the thing grown be no mere aggregation... And integration means that no part of anything is of any great value except as it be an integrated part of the harmonious whole."

— Frank Lloyd Wright, *An Autobiography*, 1932

2002 NORTH MAIN STREET, SANTA ANA, CALIFORNIA 92706  
BOWERS.ORG | TEL 714.567.3600 | FAX 714.567.3603



# BOWERS MUSEUM



Frederick Robie House, Dining Area Looking Toward Living Area, Chicago, Illinois, 1916. Photograph. Courtesy of The Frank Lloyd Wright Foundation Archives (The Museum of Modern Art | Avery Architectural & Fine Arts Library, Columbia University, New York) Drawings Copyright © Frank Lloyd Wright Foundation, Scottsdale, AZ

When one enters one of Wright's homes, these elements engage the viewer's senses of sight and touch with their color, texture, pattern, contour, and contrast of light and shadow. The works in *Architecture of the Interior* reveal how every piece of Wright's designs expressed and created an overarching order to his houses.

In prehistoric years, our ancestors huddled together around fires for warmth; Wright believed that in the modern era the hearth, the fireplace, still recalled that timeless sense of belonging and should exist as heart of the modern home. He set his hearths in large open rooms from which all other spaces extended like the spokes of a wheel. Porches, terraces, wings of bedrooms, and floor-to-ceiling walls of glass all expanded the central hearth space into adjacent interior spaces, and even further past the outside walls into the natural world beyond. The Robie House featured in *Frank Lloyd Wright* is a great example of how a single sightline could extend from one end of a home to the other, visually unifying the entire space. Organizing his interiors in this way made his rooms feel larger and created harmony by connecting everything to a central point. With too many Orange County homes feeling like a cluster of boxes connected by doors, *Frank Lloyd Wright: Architecture of the Interior* promises to provide some much-needed breathing room.

Exhibition curator **Virginia Terry Boyd** received her PhD in Human Environment and Design after obtaining an MA in Art History. Dr. Boyd is currently Emerita Professor at the University of Wisconsin-Madison in the Design Studies Department, where she was the department chair. She has been a guest scholar at the Frank Lloyd Wright Foundation Archive in Scottsdale, Arizona, and frequently lectures and publishes journal articles on issues related to Frank Lloyd Wright and Twentieth Century American material culture.

# BOWERS MUSEUM

## BOWERS MUSEUM

The **Bowers Museum** has earned an international reputation through its world-class exhibitions, including *A Quest for Beauty: Van Cleef & Arpels; Warriors, Tombs and Temples: China's Enduring Legacy; Terra Cotta Warriors: Guardians of China's First Emperor; Secrets of the Silk Road;* and *Mummies—Death and the Afterlife: Treasures from the British Museum*, as well as its own extensive art collections from throughout the Americas and the South Pacific. Additionally, the **Bowers' Kidseum**, located one block south of the main museum, offers a high-tech and interactive focus on its new mission of "Igniting Imagination through Exploration" spotlighting the excitement of art and archaeology.

Enjoy a leisurely luncheon at our award-winning restaurant, **Tangata**. Outdoor seating is also available, overlooking the Bowers' historic mission-style courtyard from 11 a.m. to 3 p.m. Browse the rare and exotic at the **Bowers Museum Gallery Store**. It's more than just a shopping trip—it's a cultural experience.

## LOCATION, HOURS AND ADMISSION

The **Bowers Museum** is in Santa Ana, is centrally located in the heart of Southern California at 2002 North Main Street, Santa Ana, CA 92706.

Tickets and Information	(714) 567-3600	<a href="http://www.bowers.org">www.bowers.org</a>
Group Tours	(714) 567-3680	<a href="mailto:grouptours@bowers.org">grouptours@bowers.org</a>
Membership	(714) 567-3639	<a href="mailto:membership@bowers.org">membership@bowers.org</a>

**Bowers Museum** and **Kidseum** are closed on Mondays, Independence Day, Thanksgiving, Christmas Day, and New Year's Day.

Regular operating hours: Tuesday through Sunday, 10 AM to 4 PM.

### GENERAL ADMISSION TICKETS

	Weekdays	Weekends
Adults	\$13	\$15
Seniors (62 & up) & Students	\$10	\$12
Children (under 12)	Free*	

\*Must be accompanied by a paying adult

# BOWERS MUSEUM

## FREEDAY

The **Bowers Museum** offers free admission to Santa Ana residents, with proof of residency, each Sunday through a generous donation in memory of Dorothy Goerl and courtesy of the Lockhart Family.

## FRANK LLOYD WRIGHT FOUNDATION

The **Frank Lloyd Wright Foundation** was established by Frank Lloyd Wright himself in 1940 to be a cultural and educational institution and the primary conservator of his work. It is dedicated to inspiring people with the living experience of Frank Lloyd Wright's ideas, philosophies, and body of work. The Foundation owns Taliesin West in Scottsdale, Arizona and Taliesin in Spring Green, Wisconsin. Both are National Historic Landmarks with robust tour operations, educational outreach, retail operations, and other activities. The Foundation: runs the Frank Lloyd Wright School of Architecture, with fully accredited undergraduate and graduate degree programs (a continuation of the apprenticeship program Wright established in 1932); stewards the vast Frank Lloyd Wright Archives; owns and manages the intellectual property for all of Frank Lloyd Wright's designs, drawings, plans, art, and other creations from his prolific 70-year career; and engages in a variety of meaningful outreach programs and partnerships – such as this exhibition. For more information, visit [www.franklloydwright.org](http://www.franklloydwright.org).

## INTERNATIONAL ARTS & ARTISTS

**International Arts & Artists** in Washington, DC is a non-profit arts service organization dedicated to increasing cross-cultural understanding and exposure to the arts internationally through exhibitions, programs and services to artists, art institutions and the public. For more information, visit [www.artsandartists.org](http://www.artsandartists.org).

# BOWERS MUSEUM

## PROGRAMMING

### LECTURES

**Jeff Herr**, curator of the Hollyhock House, Los Angeles, will speak on Wright's obsession with design in both the exteriors and interiors of his buildings and particularly about the recent renovation and re-opening of Frank Lloyd Wright's historic masterpiece, The Hollyhock House, and its special place in the history of Hollywood and Southern California. Sun, June 25

**Alan Hess**, author of *Frank Lloyd Wright: Natural Design, Organic Architecture: Lessons for Building Green from an American Original*, will speak on Wright's influence on architecture in Southern California and the region's influence on his approach to indoor-outdoor living and design. Sun, August 13

### FILMS

***A Girl is a Fellow Here*, directed by Beverly Willis** Sun, July 30  
A film by Beverly Willis, colleague of Frank Lloyd Wright, set at his compound in Arizona. This film documents the significance of Frank Lloyd Wright's equal treatment of the female role in his work in the broader context of the architecture field.

### AFTER-HOURS PROGRAMS

**Architecture of Food Dinner Program** Fri, August 4  
Enjoy a 3-course meal and presentation by chef, Brian Black of Tangata exploring the interior and exterior architecture of the food we eat. Dinner includes access to *Frank Lloyd Wright: Architecture of the Interior*.

### OTHER

**Frank Lloyd Wright Tours by Architects** Sat, July 1, 15  
Interior Architects from AIA-LA and OC will be assigned to present 45-60minute tours of the exhibition, providing professional insight and expertise on the first two Saturdays of July and August. Sat, August 5, 12

INTERNATIONAL  
**ARTS & ARTISTS**

***Frank Lloyd Wright: Architecture of the Interior***

**\*All educational and promotional materials must be submitted for approval by  
The Frank Lloyd Wright Archives**

**\*\*Send proofs of ALL press/publication to IA&A's Communications Coordinator  
Chase Carter ([chasec@artsandartists.org](mailto:chasec@artsandartists.org)) for approval prior to production.  
Please allow 5 business days to respond.**

**\*\*\*Please add current year after every ©.**

---

**Image Credit List**

1. Frederick Bogk House, Carpet Design, 1916. Photographic Reproduction. Courtesy of The Frank Lloyd Wright Foundation Archives (The Museum of Modern Art | Avery Architectural & Fine Arts Library, Columbia University, New York). Copyright © Frank Lloyd Wright Foundation.
2. Susan Lawrence Dana House, Dining Area, Hanging Lamps, Springfield, Illinois, 1902. Photograph. © Paul Rocheleau.
3. Gerald Tonkens House, Usonian Automatic, Living Area, Amberley Village, Ohio, 1954. Photograph. © Paul Rocheleau.
4. Bernard Schwartz House, Two Rivers, Wisconsin, 1939. Photograph. Courtesy of The Frank Lloyd Wright Foundation Archives (The Museum of Modern Art | Avery Architectural & Fine Arts Library, Columbia University, New York). Photo by Edmund Teske.
5. Edward E. Boynton House, Dining Area, Rochester, New York, 1908. Photograph. © Paul Rocheleau.
6. Frederick Robie House, Dining Area Looking Toward Living Area, Chicago, Illinois, 1916. Photograph. Courtesy of The Frank Lloyd Wright Foundation Archives (The Museum of Modern Art | Avery Architectural & Fine Arts Library, Columbia University, New York).
7. Lloyd Lewis House, Living Area Looking Toward Landscape, Libertyville, Illinois, 1940. Photograph. Courtesy of The Frank Lloyd Wright Foundation Archives (The Museum of Modern Art | Avery Architectural & Fine Arts Library, Columbia University, New York). Copyright © Hedrich-Blessing.

8. Lloyd Lewis House, Living Area Looking Toward Fireplace, Libertyville, Illinois, 1940. Photograph. Courtesy of The Frank Lloyd Wright Foundation Archives (The Museum of Modern Art | Avery Architectural & Fine Arts Library, Columbia University, New York). Copyright © Hedrich-Blessing.
9. American Model C-3 Ready-cut (System-Built) House Design, 1915. Photographic Reproduction. Courtesy of The Frank Lloyd Wright Foundation Archives (The Museum of Modern Art | Avery Architectural & Fine Arts Library, Columbia University, New York). Copyright © Frank Lloyd Wright Foundation.
10. C. Thaxter Shaw House, Living Area, Montreal, Canada, 1906. Photographic Reproduction. Courtesy of The Frank Lloyd Wright Foundation Archives (The Museum of Modern Art | Avery Architectural & Fine Arts Library, Columbia University, New York). Copyright © Frank Lloyd Wright Foundation.
11. John Nesbitt "Sijistan" Remodel of Charles Ennis House, Dining Area, Los Angeles, California, 1941. Photographic Reproduction. Courtesy of The Frank Lloyd Wright Foundation Archives (The Museum of Modern Art | Avery Architectural & Fine Arts Library, Columbia University, New York). Copyright © Frank Lloyd Wright Foundation.

1 ROG DESIGN BOGIL MILU LEE

~~1915~~



1002.01

V. 1/2

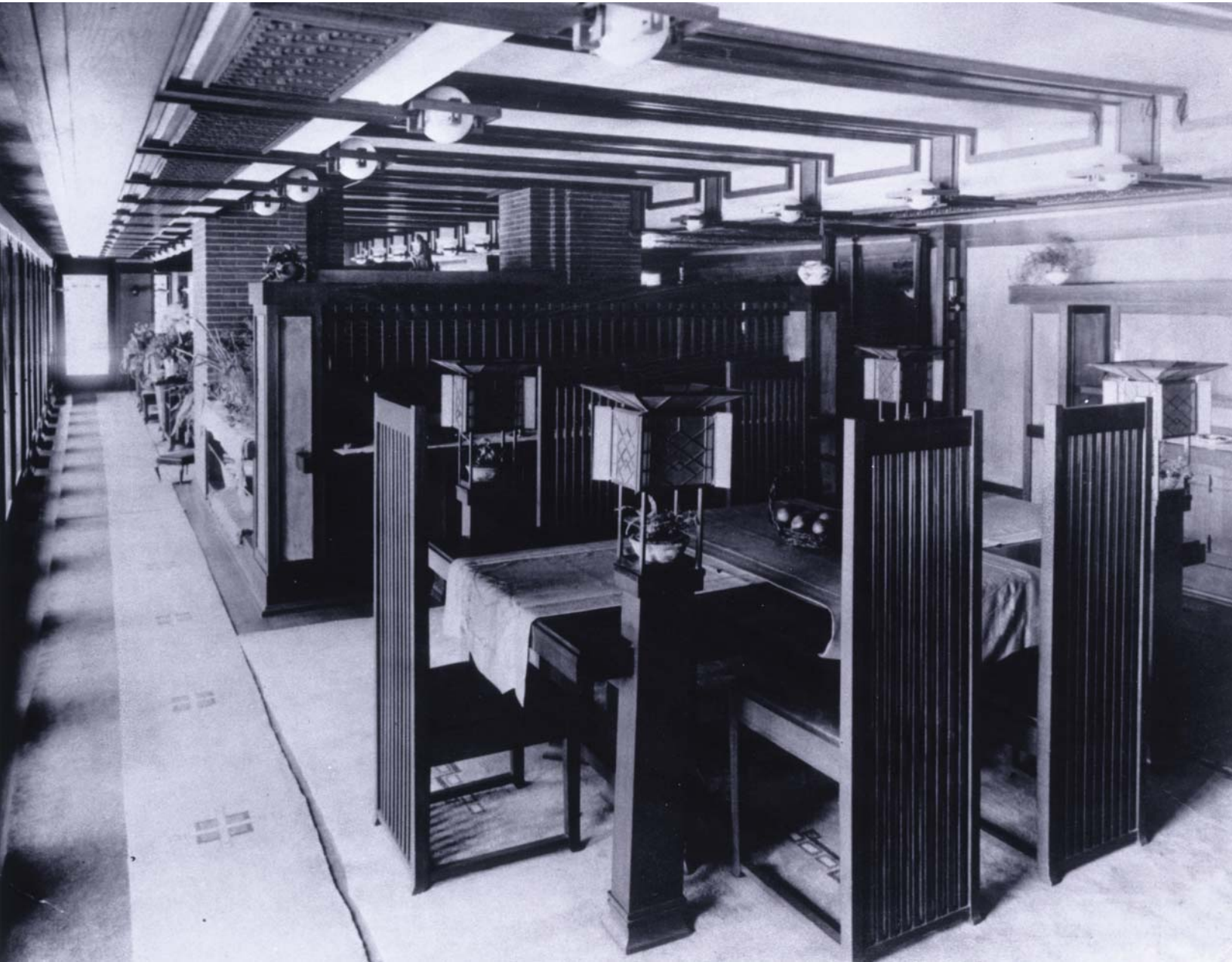






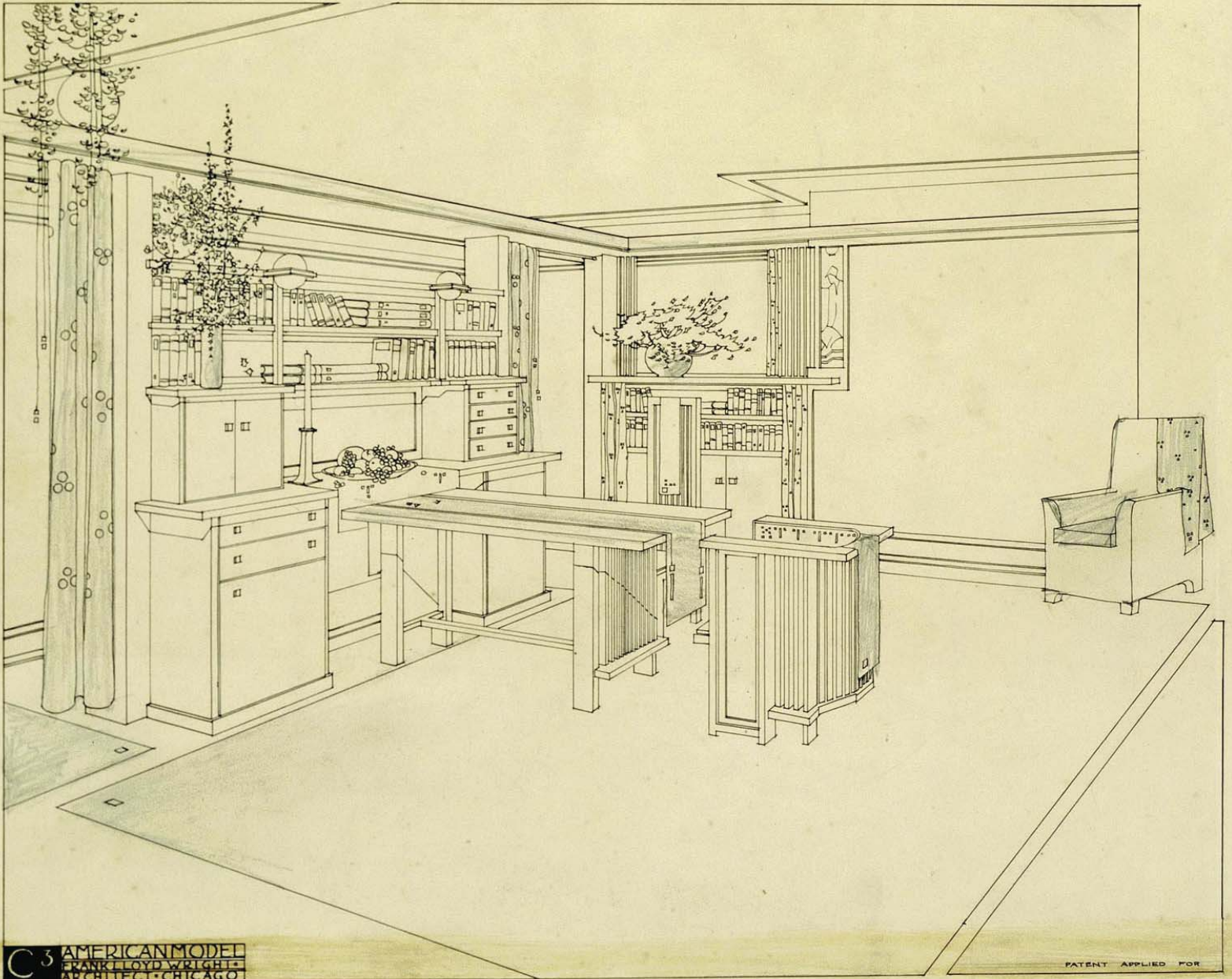








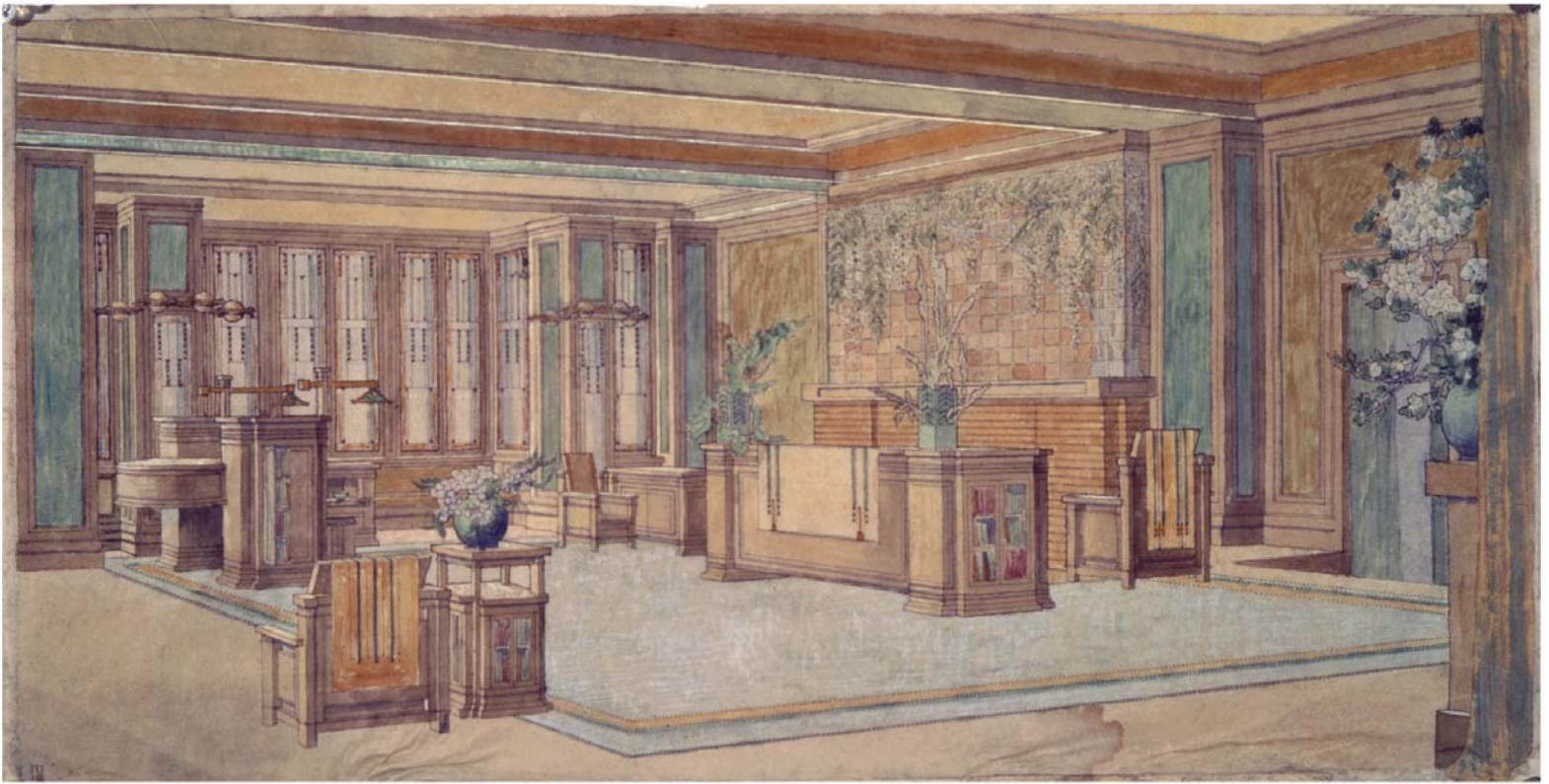




C<sup>3</sup> AMERICAN MODEL  
FRANK LOYD WRIGHT  
ARCHITECT • CHICAGO

PATENT APPLIED FOR







S I J I S T A N D I N G R O O M J O H N D N E S B I T T

Home of the palace of a famous Persian king.

4119.001